

***IV International Symposium  
for Dark Sky Parks***

**MONTSEC**  
*June 27th - July 1st  
2011*

*Road Runner Measurement Results*



Sociedad Malagueña de Astronomía



# SQM-LU interaction

The SQM-LU unit used on the measurement, was able to measure values of 21.67 Magnitudes Per Square Arc Second (MPSAS).

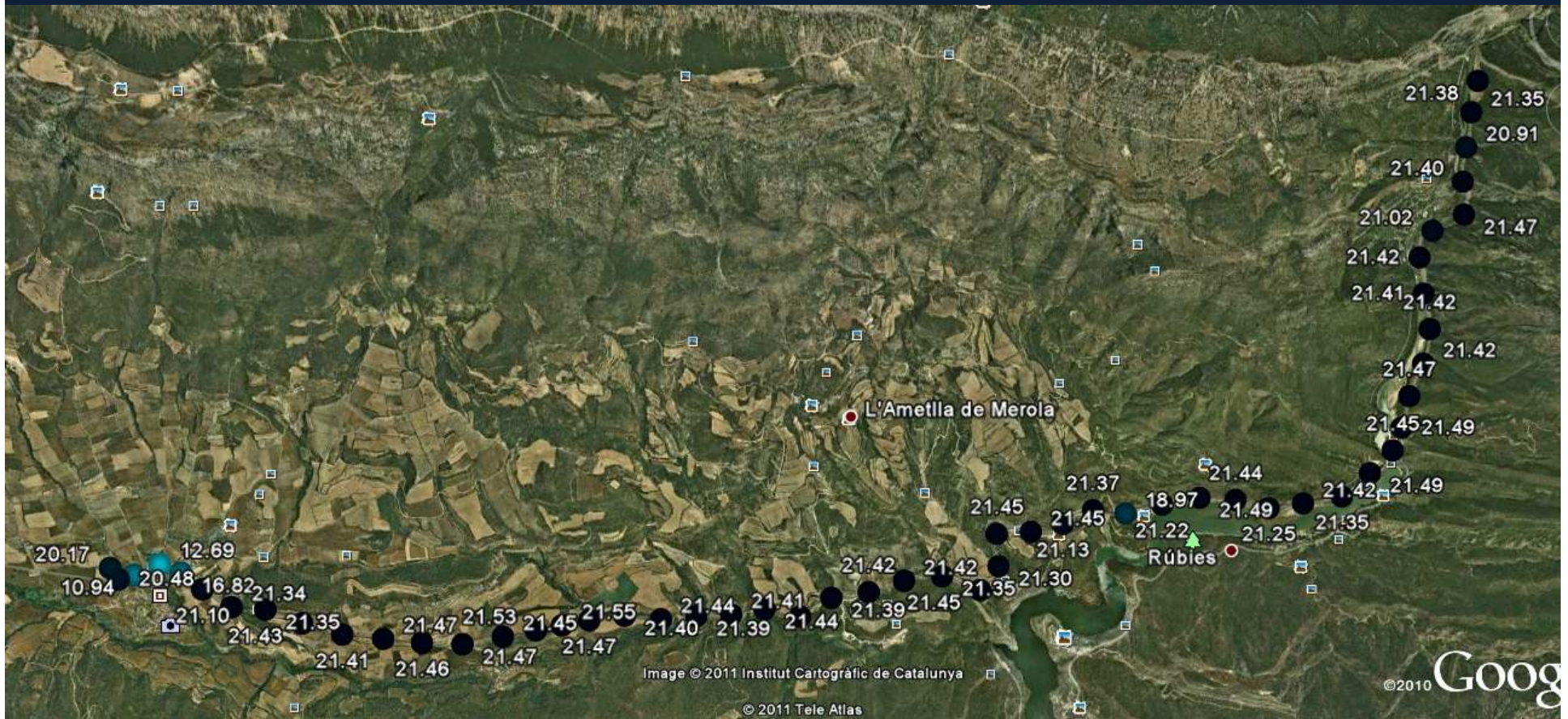
The time used for the SQM to perform the measure was about milliseconds!!.

# Leaving the Hotel



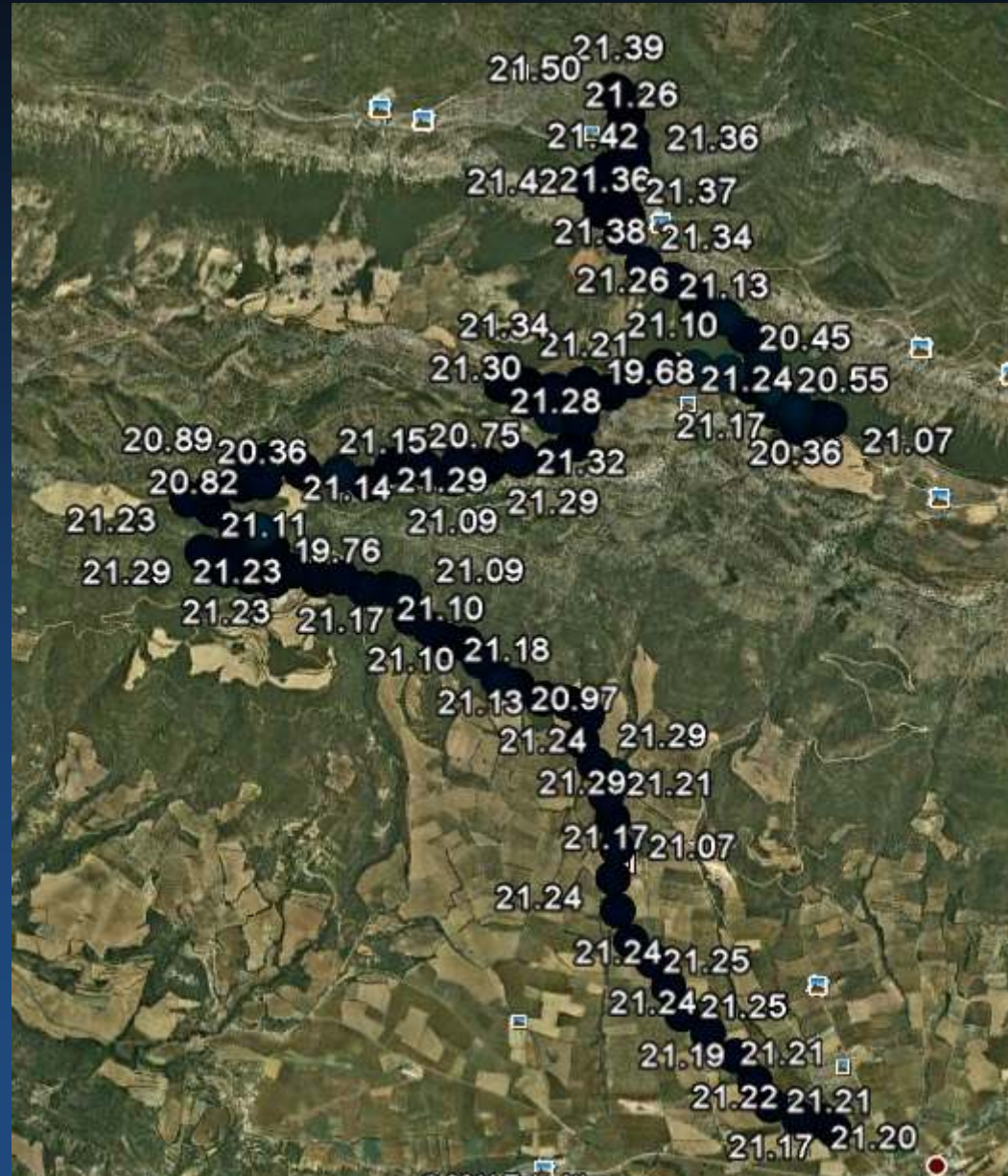


# Reaching the Cementery





# Leaving the Cementery





# Reaching the Observatory

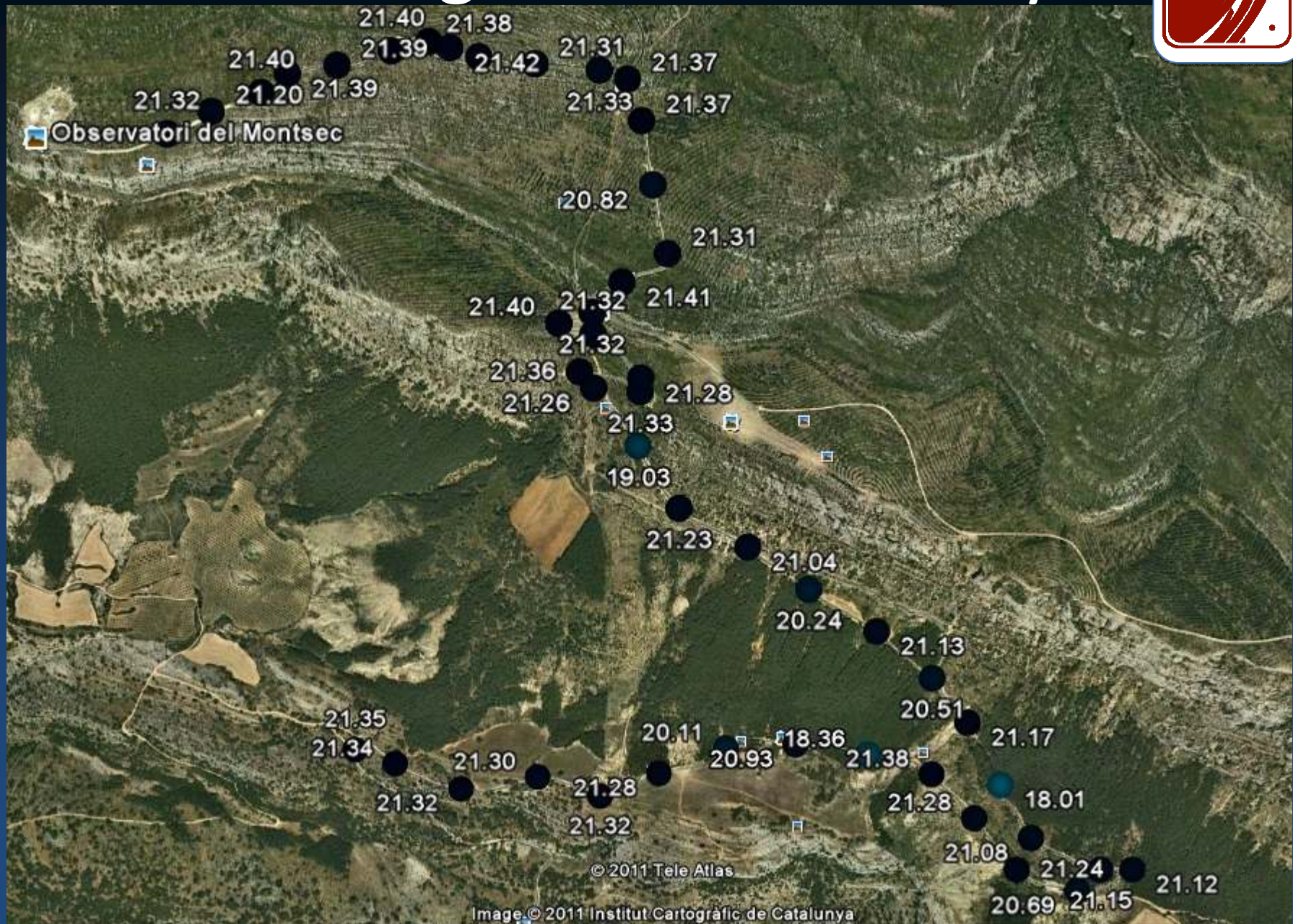


*Best values measured!!!*



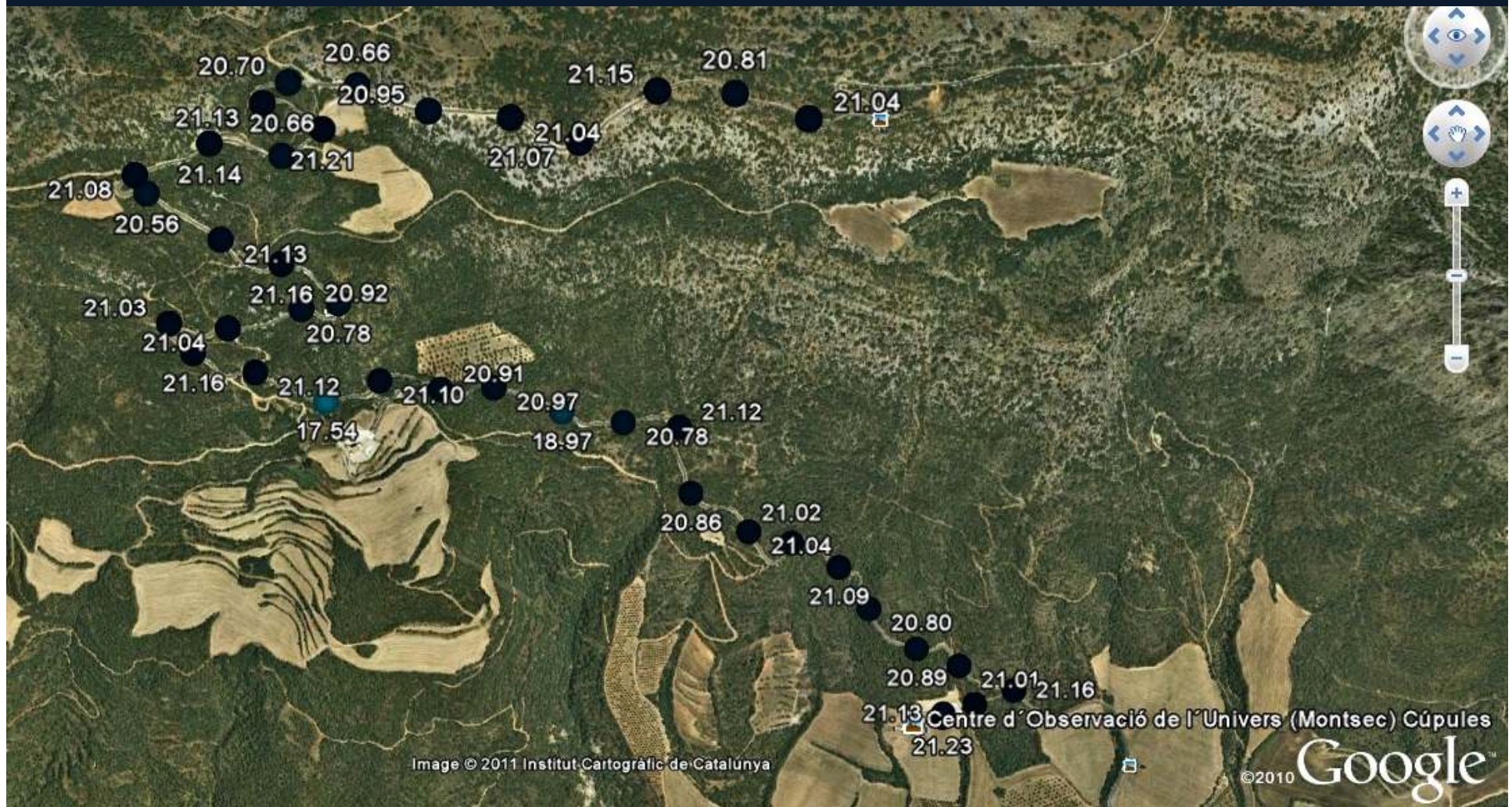


# Leaving the Observatory



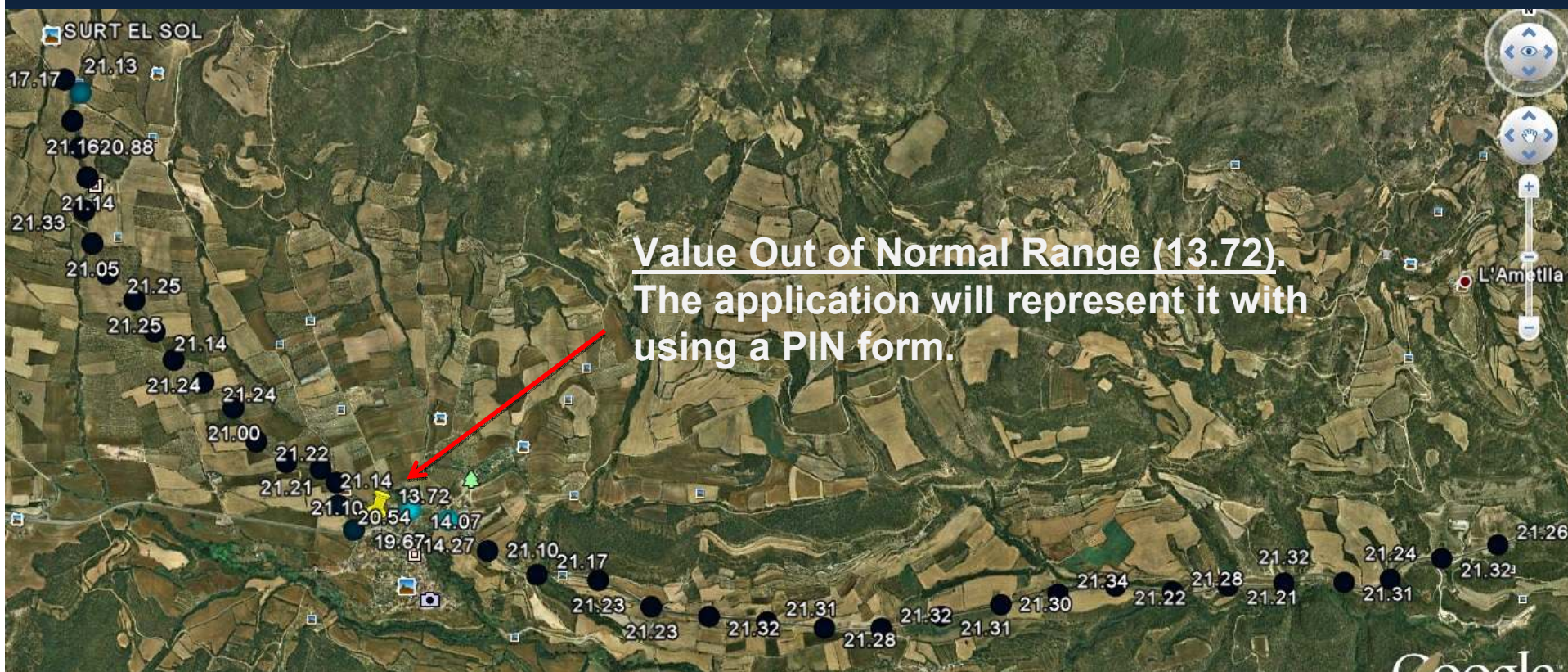


# Reaching C.O.U.





# Leaving C.O.U.



Value Out of Normal Range (13.72).  
The application will represent it with  
using a PIN form.



# Before coming back the hotel

